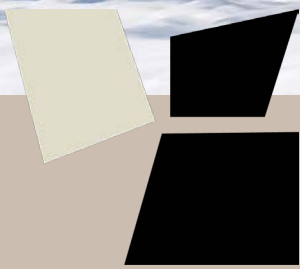


SALE OPEN TO FOREIGNERS



Chalet

BENEDICT

Villars-sur-Ollon

The project

This project involves the total renovation and expansion of the iconic Benedict chalet built in 1961 to showcase the authentic charm of the old building. The project also includes the modernization of the interior for a better distribution of spaces and optimal comfort.

The chalets of 8.5 rooms offer a surface of more than 170m² totally customizable. The rooms are spread over 2 floors and one floor is dedicated to an open living room. A ski storage area is provided as well as a space for spa.

This chalet is part of a larger project that also includes two new apartment residences.



DELIVERY : 2025

THE BENEDICT CHALETS

TWO CHALETS WITH ALPINE CHARM IN THE HEART OF THE SWISS ALPS. YOUR SECOND HOME AT THE BOTTOM OF THE SKI SLOPES.



Situation

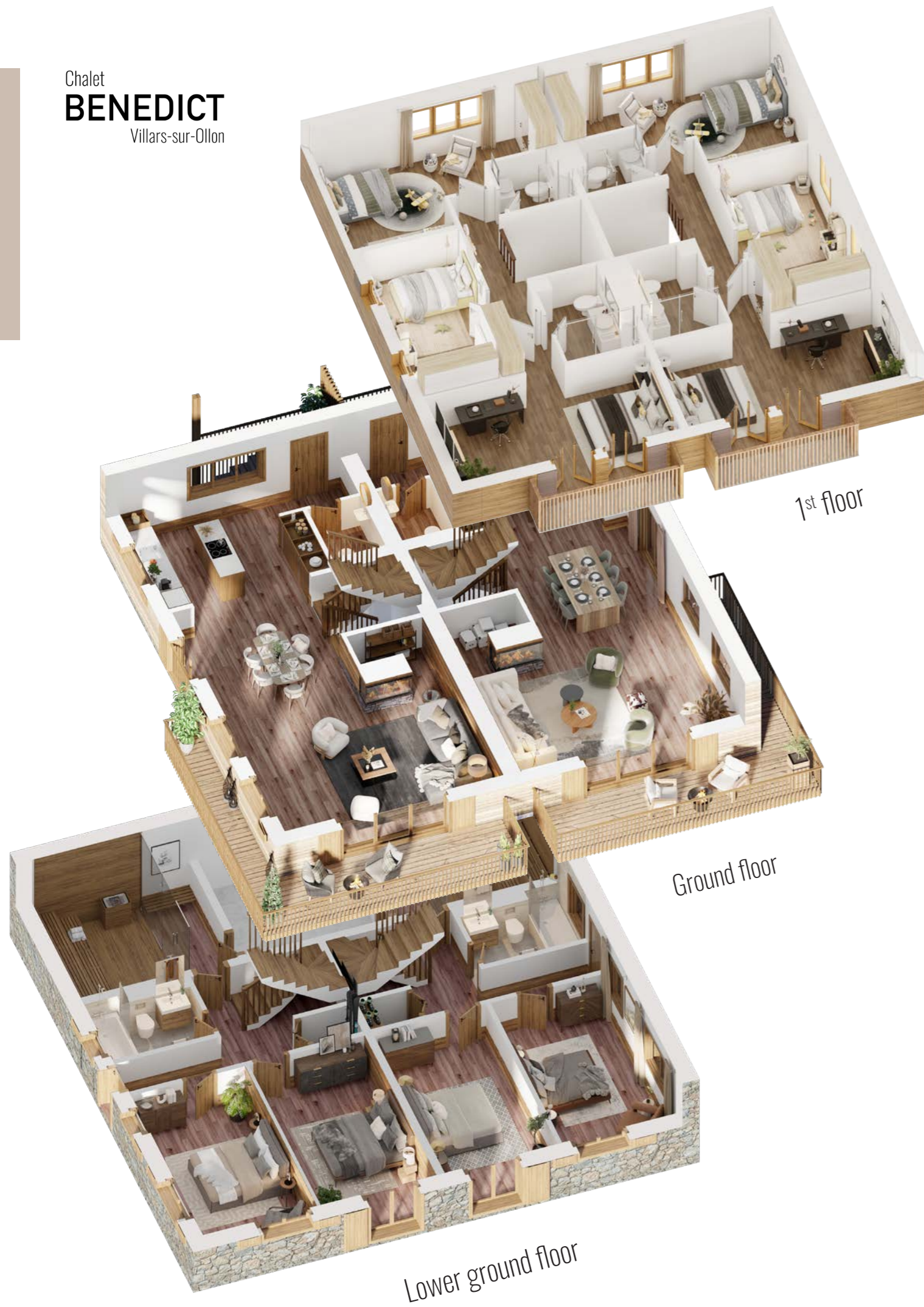
In an exceptional location at the foot of the ski slopes, the chalet Benedict offer you a warm interior in an authentic setting in the heart of the swiss alps.

Villars-sur-Ollon is an exclusive and family mountain village. At an altitude of 1,300 m, Villars offers a peaceful and cosmopolitan atmosphere. Its lively city center is home to many shops and charming restaurants. The village also hosts several prestigious private schools.

The exceptional location of the Benedict chalets, in the heart of the station, offers a remarkable living environment. The main asset of the project is undoubtedly the proximity to the Roc d'Orsay cable car which is 50m from the chalet. The village, shops and the train station are also within a 10-minute walk which allows you to enjoy the calm of the mountain and being close to all amenities.

In winter, the ski area of more than 130 km of ski slope directly accessible on foot from the chalet. In summer, Villars offers many activities such as mountain biking, golf and more than 300 km of hiking trails.

Chalet
BENEDICT
Villars-sur-Ollon



The chalet

This chalet offers a refined and warm definition of mountain life. The mixture of tradition, luxury and modernity that comes from this project gives it a unique ambience.

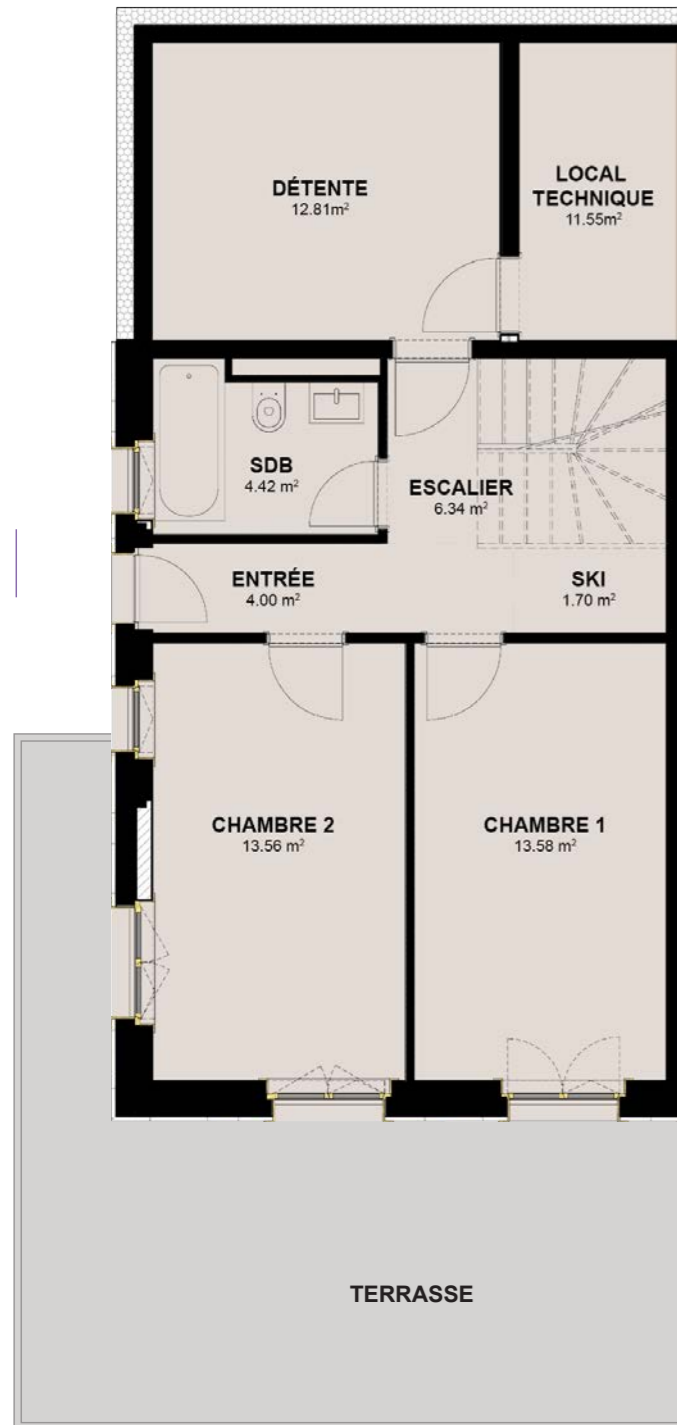
The identity of the Benedict project draws its inspiration from the characteristic alpine architecture of the region and the history of the chalet built in 1961. This tribute to traditions is enhanced by a contemporary approach and resolutely focused on comfort. The nobility of the materials used provides an atmosphere conducive to wellness. The chalet offers beautiful outdoor spaces with a terrace on the ground floor and south facing balconies on each floor.

Inside, these are large spaces. Modern rooms with wooden inserts for premium services. Everything has been designed to make your property look like you. Personalization includes the choice of materials, equipment, kitchen or even finishes. For this, our team is at your disposal to create the chalet of your dreams.

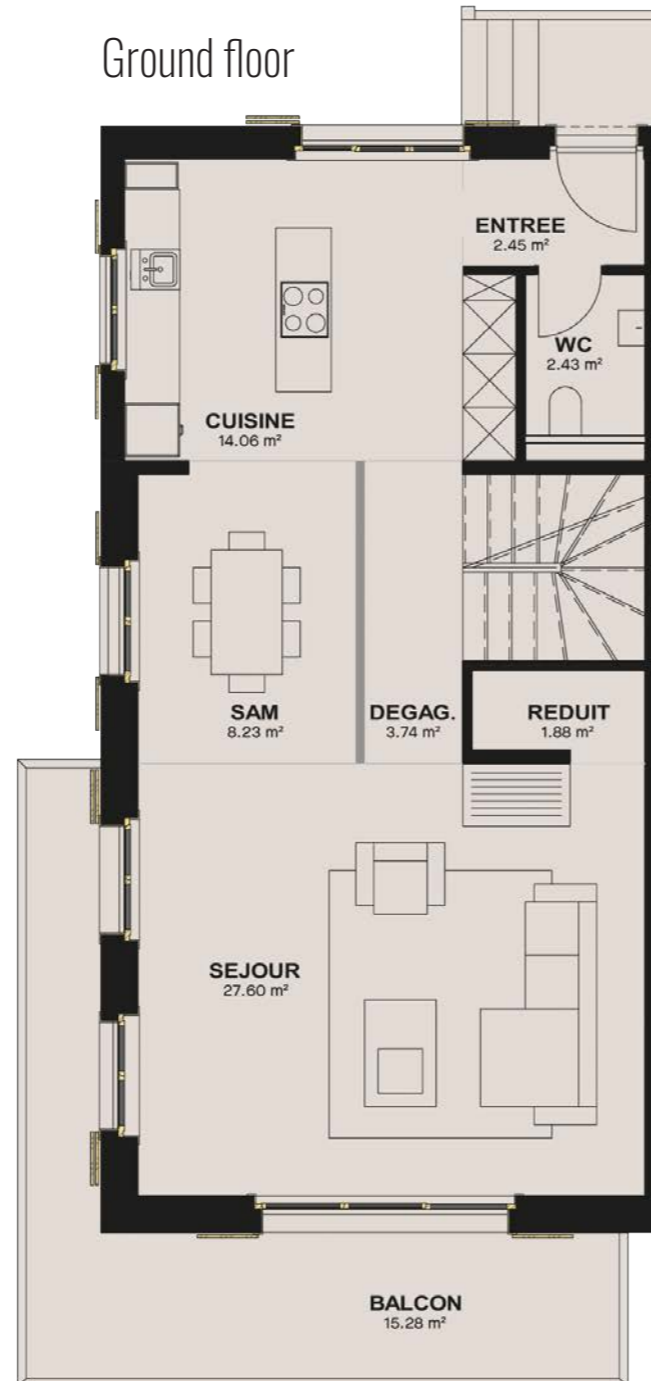
The environmental approach favours the preservation of natural resources through the sustainable design of the chalet and their high energy performance standard. This construction also benefits from an energy monitoring system, optimal insulation, geothermal heating and high-quality sound insulation.

Chalet
BENEDICT
 Villars-sur-Ollon

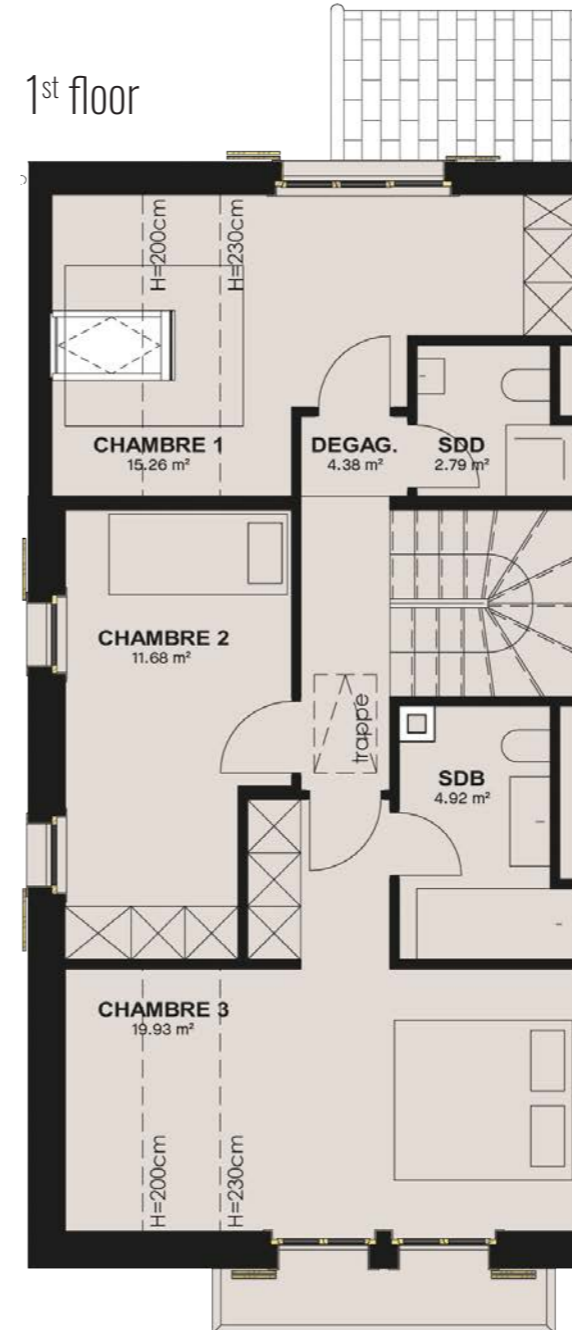
Lower ground floor



Ground floor



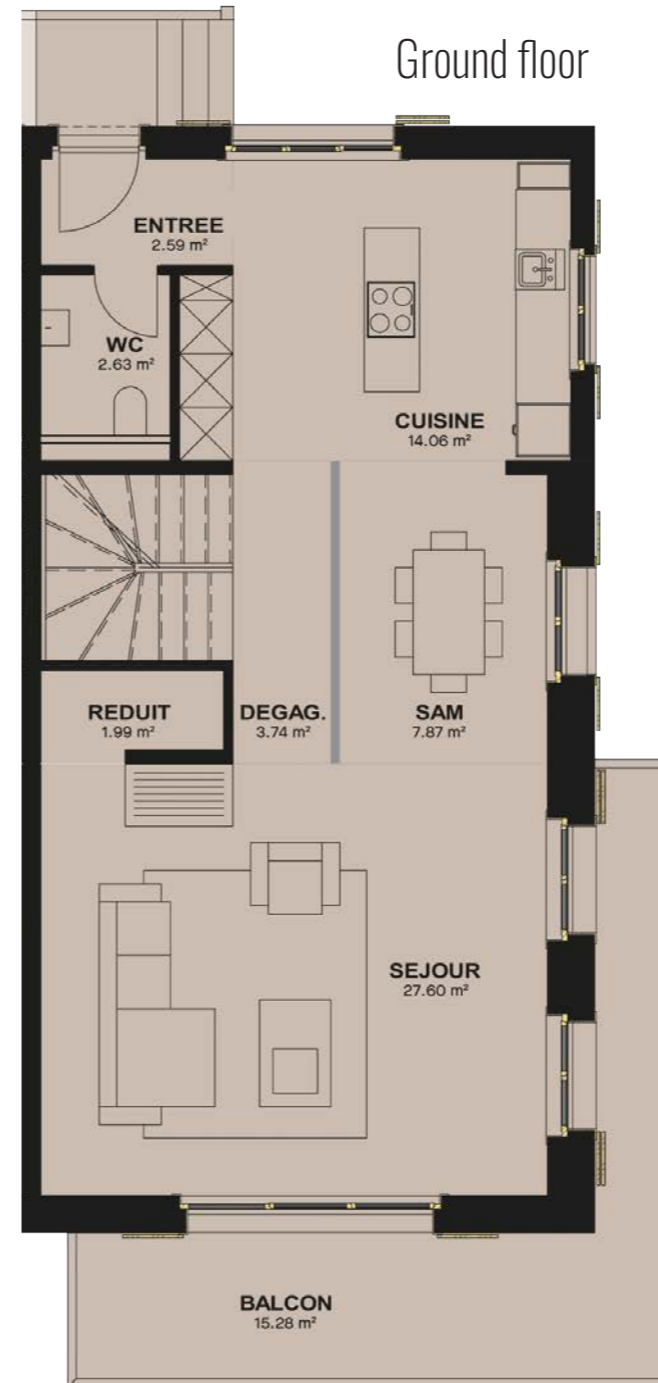
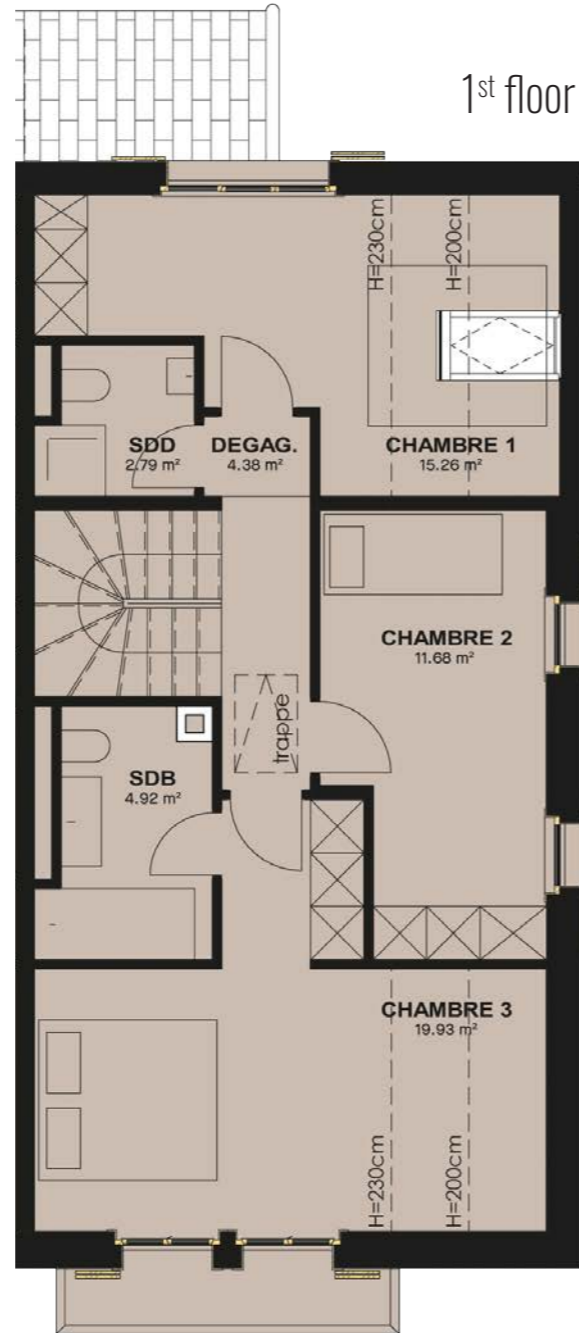
1st floor



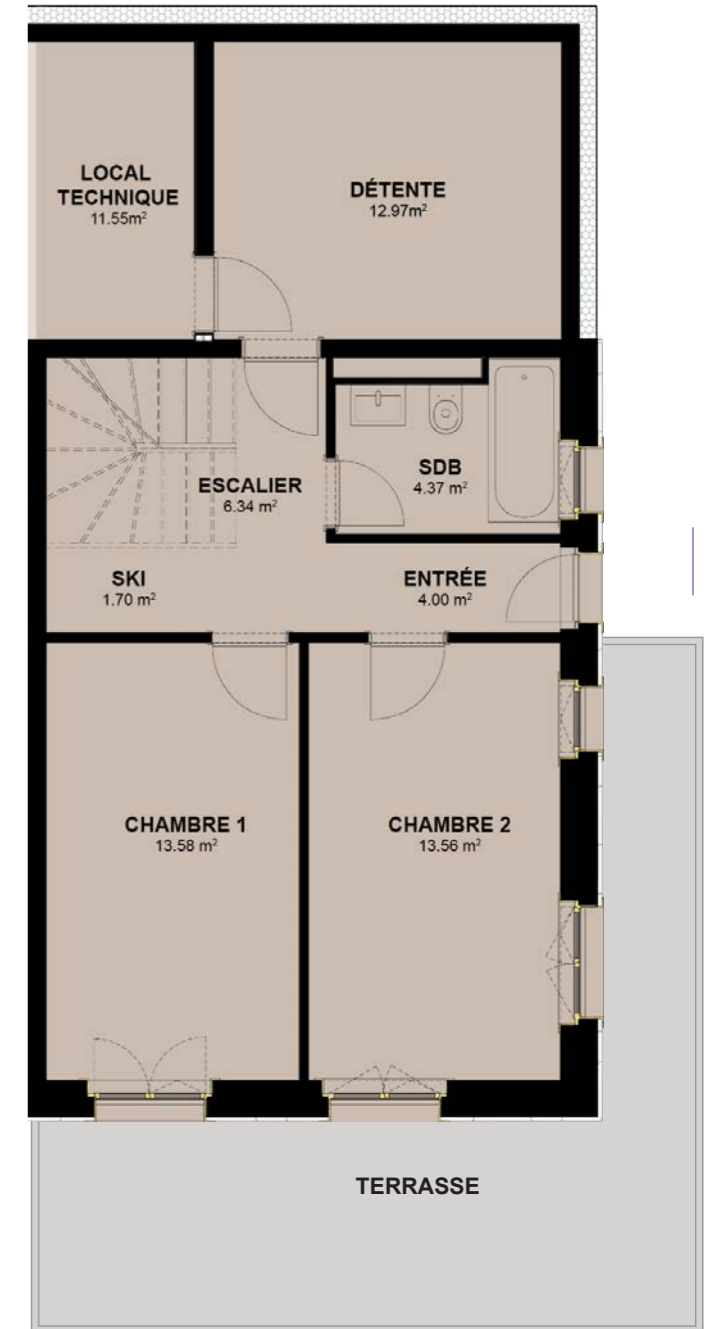
Chalet A1

Orientation	S-O
Rooms	6,5
Living area	184 m ²
Garden area	to be defined
Indoor parking	1
Outdoor parking	1

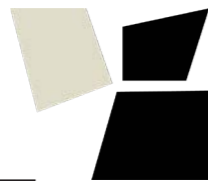
Chalet
BENEDICT
 Villars-sur-Ollon



Lower ground floor



Chalet A2



Orientation	S-E
Rooms	6,5
Living area	184 m ²
Garden area	to be defined
Indoor parking	1
Outdoor parking	1



Raized real estate

Contact :
Raized Real Estate SA

Route de la Chaux 4,
1030 Bussigny
+41 21 799 90 90
info@raized.ch
www.raized.ch



Architecte :
Archi DT SA